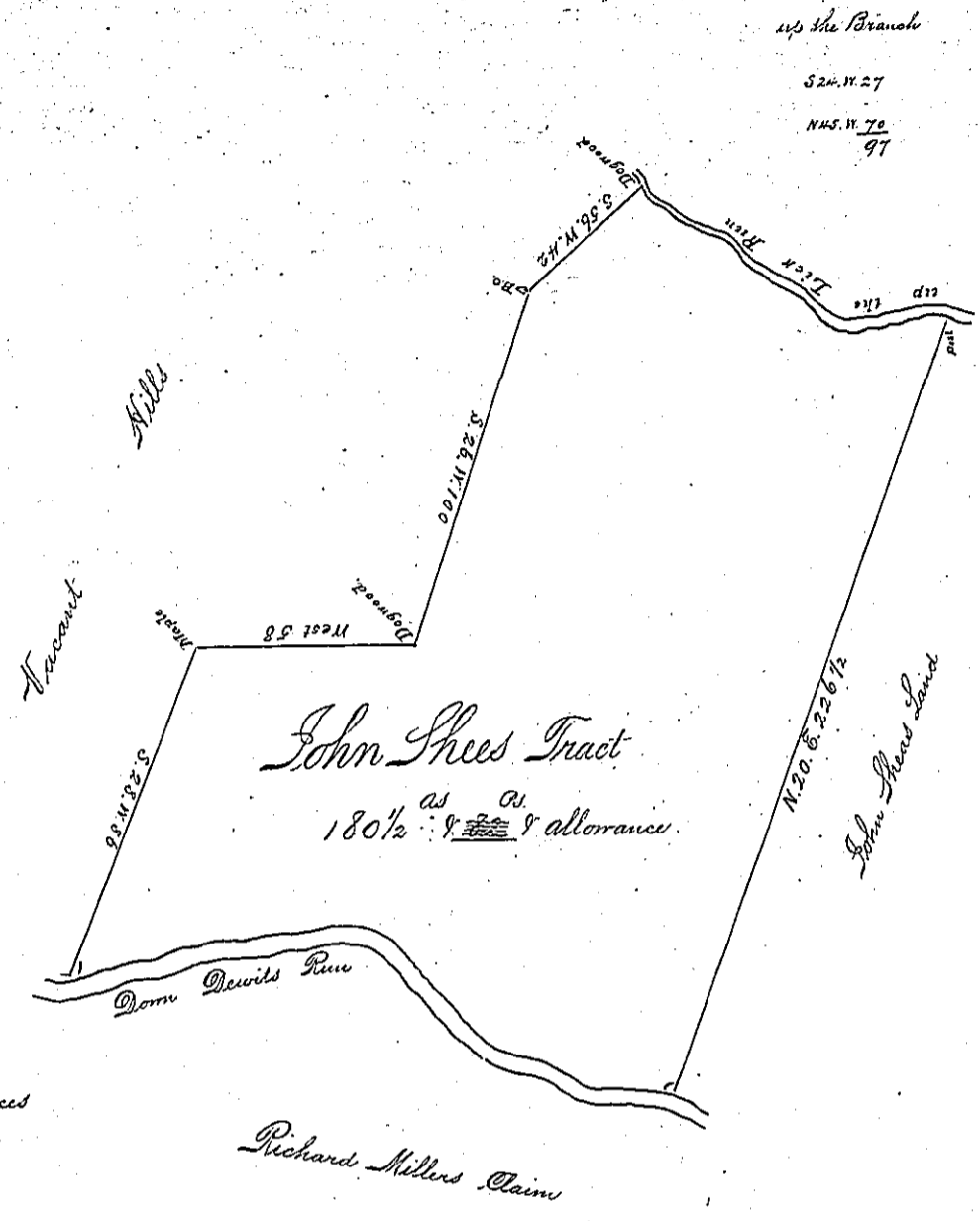


September 24 1784



Courses & Distances

Down the Run	
East	96 1/2
S. 34. E. 35	
S. 59. E. 30	
S. 70. E. 26 1/2	
<u>188.</u>	

A Draught of a Tract of Land situate in Bedford County containing One hundred and Eighty acres & Eighty two perches & the usual allowance of Six p<sup>ts</sup> & c. Surveyed the 24<sup>th</sup> day of ~~Sept~~<sup>Apr</sup> 1785 in pursuance of a Warrant Dated the 18<sup>th</sup> day of March 1785

To John Lukens Esq: S. G.

George Woods D. S.

N<sup>o</sup> 155

IN TESTIMONY that the above is a copy of the original remaining on file in the Department of Internal Affairs of Pennsylvania, made conformably to an Act of Assembly approved the 16th day of February, 1833, I have hereunto set my Hand and caused the Seal of said Department to be affixed at Harrisburg, this

*first* day of *December* 1896.  
*James W. Latta*  
 Secretary of Internal Affairs.